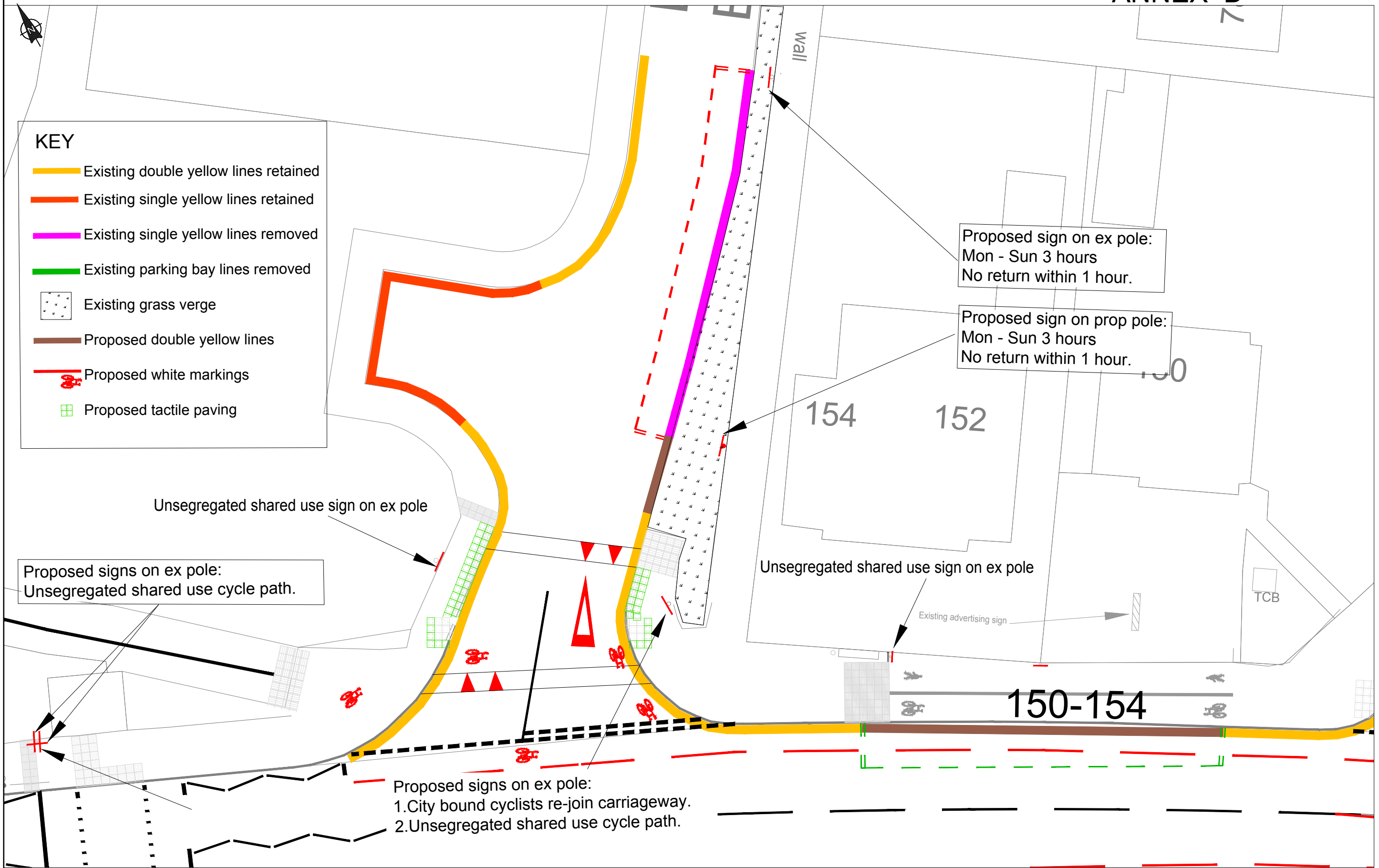


KEY

- Existing double yellow lines retained
- Existing single yellow lines retained
- Existing single yellow lines removed
- Existing parking bay lines removed
- Existing grass verge
- Proposed double yellow lines
- Proposed white markings
- Proposed tactile paving



Proposed sign on ex pole:
Mon - Sun 3 hours
No return within 1 hour.

Proposed sign on prop pole:
Mon - Sun 3 hours
No return within 1 hour.

Proposed signs on ex pole:
Unsegregated shared use cycle path.

Unsegregated shared use sign on ex pole

Unsegregated shared use sign on ex pole

Existing advertising sign

Proposed signs on ex pole:
1. City bound cyclists re-join carriageway.
2. Unsegregated shared use cycle path.



Drawn by	TB	Date:	SEP 2016
Checked by	MD	Date:	SEP 2016
Authorised by		Date:	
Drawing Scale:	N.T.S.		
Revision	By	Checked/Approved	Date

Project
**Holgate Road
(Iron Bridge to Acomb Road Cycle Route)**

Drawing
Chancery Rise

Drawing No.
TP/1201082/017

Revision